

Table 2: The effect of previous relatives on personal characteristics

	(1)	(2)	(3)	(4)	(5)	(6)	(7)	(8)	(9)	(10)	(11)	(12)
	House	House	Age of entry	Age of entry	Pre. public off.	Pre. public off.	College degree	College degree	Outsider	Outsider	Female	Female
Previous Relative	-0.07503 [0.01842]***	-0.0764 [0.01780]***	-0.50866 [0.35166]	-0.34821 [0.29524]	-0.05641 [0.01849]***	-0.05611 [0.01734]***	0.14033 [0.01805]***	0.12945 [0.01718]***	-0.03102 [0.02218]	-0.02571 [0.02038]	0.02492 [0.00795]***	0.02566 [0.00771]***
House				-4.98911 [0.32099]***		-0.00657 [0.01575]		-0.05303 [0.01784]***		-0.02909 [0.01412]**		0.00884 [0.00438]**
Age of entry		-0.00619 [0.00078]***				0.00559 [0.00058]***		-0.00762 [0.00047]***		0.00543 [0.00080]***		0.00071 [0.00019]***
Pre. public office		-0.00351 [0.00819]		2.40951 [0.26049]***				0.00453 [0.01136]		-0.0788 [0.01192]***		-0.00191 [0.00421]
College degree		-0.02606 [0.00757]***		-3.01501 [0.17918]***		0.00417 [0.01042]				-0.08569 [0.01593]***		0.00314 [0.00207]
Outsider		-0.01264 [0.00594]**		1.90007 [0.27805]***		-0.06401 [0.01059]***		-0.07575 [0.01417]***				0.0085 [0.00385]**
Female		0.05167 [0.02664]*		3.33733 [0.76922]***		-0.02092 [0.04658]		0.03731 [0.02341]		0.11441 [0.04944]**		
Constant	1.05567 [0.00278]***	1.25058 [0.02223]***	27.32269 [0.06347]***	34.84151 [0.40889]***	-0.03379 [0.00401]***	-0.16729 [0.02506]***	0.8865 [0.00311]***	1.16926 [0.02570]***	0.24887 [0.00431]***	0.20351 [0.02953]***	0.0088 [0.00094]***	-0.02484 [0.00846]***
Year	Y	Y	Y	Y	Y	Y	Y	Y	Y	Y	Y	Y
State	Y	Y	Y	Y	Y	Y	Y	Y	Y	Y	Y	Y
Observations	8765	8765	8765	8765	8765	8765	8765	8765	8765	8765	8765	8765
R-squared	0.1	0.13	0.15	0.22	0.04	0.05	0.16	0.19	0.19	0.22	0.09	0.09

Sample: Individuals who did not follow a relative's death and born after 1800.

Robust standard errors clustered at the state level. * significant at 10%; ** significant at 5%; *** significant at 1%

Table 3: The effect of previous relatives on tenure length

	(1) longterm	(2) longterm	(3) totaltenure	(4) totaltenure
Previous Relative	0.00995 [0.01974]	0.02084 [0.02001]	0.0706 [0.14075]	-0.04164 [0.13742]
House		0.2181 [0.02055]***		-1.03206 [0.14718]***
Age of entry		-0.00663 [0.00058]***		-0.08639 [0.00657]***
Pre. public office		0.05972 [0.01084]***		0.52768 [0.08598]***
College degree		0.03864 [0.01351]***		0.17706 [0.06927]**
Outsider		-0.01875 [0.01073]*		-0.15024 [0.07615]*
Female		-0.02124 [0.03688]		-0.35644 [0.22569]
Constant	0.92853 [0.00358]***	0.85211 [0.03266]***	2.53806 [0.02882]***	5.88934 [0.23957]***
Year	Y	Y	Y	Y
State	Y	Y	Y	Y
Observations	8765	8765	8765	8765
R-squared	0.1	0.14	0.17	0.22

Sample: Individuals who did not follow a relative's death and born after 1800.

Robust standard errors clustered at the state level.

* significant at 10%; ** significant at 5%; *** significant at 1%

Table 4: Tenure length and Postrelatives

	Dependent Variable: Postrelatives				
	(1)	(2)	(3)	(4)	(5)
Longterm	0.02144	0.01835	0.02667	0.02901	0.02892
	[0.00491]***	[0.00409]***	[0.00459]***	[0.00431]***	[0.00454]***
Constant	0.07125	0.06598	0.07174	0.36106	0.24623
	[0.00772]***	[0.00694]***	[0.00756]***	[0.05319]***	[0.08778]***
Prerelative					0.16892
					[0.02601]***
Female					-0.05281
					[0.02537]**
College degree					0.01241
					[0.00861]
Outsider					-0.00039
					[0.00818]
Previous public office					-0.00125
					[0.00772]
Military					0.01498
					[0.00688]**
Lawyer					-0.00048
					[0.00583]
Farmer					0.00974
					[0.01010]
Senate only					0.05005
					[0.01182]***
House to Senate					0.06844
					[0.02305]***
Senate to House					0.0877
					[0.06448]
Age of entry decade	N	N	N	N	Y
Death age decade	N	N	N	N	Y
Year Effects	N	N	N	Y	Y
State Effects	N	N	N	Y	Y
Died in office excluded	N	Y	Y	Y	Y
Born before 1910	N	N	Y	Y	Y
Observations	11455	10379	8812	8812	8490
R-squared	0	0	0	0.09	0.13

Sample: Individuals who did not die in office and who were born before 1910

Standard errors clustered at state level in brackets. * significant at 10%; ** significant at 5%;

*** significant at 1%

Table 5: Tenure length and Postrelatives

Dependent Variable: Postrelatives

	(1)	(2)	(3)	(4)	(5)	(6)	(7)	(8)	(9)	(10)
Total tenure	0.0041 [0.00084]***	0.00231 [0.00074]***	0.00439 [0.00101]***	0.00763 [0.00105]***	0.00561 [0.00095]***	0.0081 [.00198]***	0.0069 [.00191]***	0.01345 [.00231]***	0.0158 [.00232]***	0.01362 [0.00208]***
Total tenure^2						-0.00035 [-.00012]**	-0.00035 [.0012]***	-0.00068 [.00014]***	-0.00061 [.0013]***	-0.00058 [0.00011]***
Constant	0.06993 [0.00765]***	0.06958 [0.00732]***	0.07399 [0.00817]***	0.35418 [0.05201]***	0.24198 [0.08755]***	0.060612 [.00475]***	0.06061 [.00475]***	0.05742 [.00014]***	0.07422 [.02421]***	0.01392 [0.03074]
Prerelative					0.16876 [0.02575]***					0.16821 [0.02586]***
Female					-0.04936 [0.02473]*					-0.05073 [0.02301]*
College degree					0.01269 [0.00877]					0.00976 [0.00899]
Outsider					-0.00013 [0.00830]					-0.00056 [0.00791]
Previous public office					-0.00181 [0.00764]					-0.00284 [0.00737]
Military					0.01481 [0.00691]**					0.01322 [0.00702]
Lawyer					0.00004 [0.00590]					-0.00117 [0.00639]
Farmer					0.01047 [0.00999]					0.00884 [0.00981]
Senate only					0.03655 [0.01136]***					0.03831 [0.01320]***
House to Senate					0.04998 [0.02342]**					0.04788 [0.02262]*
Senate to House					0.08485 [0.06249]					0.00032 [0.06029]
Age of entry decade	N	N	N	N	Y	N	N	N	N	Y
Death age decade	N	N	N	N	Y	N	N	N	N	Y
Year Effects	N	N	N	Y	Y	N	N	N	Y	Y
State Effects	N	N	N	Y	Y	N	N	N	Y	Y
Died in office excluded	N	Y	Y	Y	Y	N	Y	Y	Y	Y
Born before 1910	N	N	Y	Y	Y	N	N	Y	Y	Y
Observations	11455	10379	8812	8812	8490	11455	10379	8812	8812	8490
R-squared	0	0	0	0.09	0.13	0	0	0	0.09	0.13

Standard errors clustered at state level in brackets. * significant at 10%; ** significant at 5%; *** significant at 1%

Table 6: Characteristics of close winners versus close losers in first re-election attempt

	2.5% window			5% window		
	Win	Lose	Difference	Win	Lose	Difference
Posterior relative in office	0.071 [.016]	0.028 [.01]	0.043 [.019]**	0.067 [.01]	0.031 [.008]	0.035 [.013]**
Year	1885.48 [2.04]	1887.00 [2.14]	-2.41 [2.96]	1885.01 [1.42]	1888.88 [1.65]	-3.87 [2.16]*
Age at entry	43.88 [.55]	44.68 [.6]	-0.8 [.81]	43.82 [.37]	44.72 [.44]	-0.90 [.57]
Age at death	71.18 [.75]	71.00 [.78]	0.18 [1.08]	71.51 [.48]	70.90 [.57]	0.61 [.74]
Female	0.007 [.005]	0.008 [.006]	-0.001 [.008]	0.005 [.003]	0.004 [.003]	0.001 [.004]
College degree	0.607 [.03]	0.633 [.03]	-0.027 [.043]	0.600 [.02]	0.606 [.022]	-0.006 [.03]
Outsider to state	0.449 [.03]	0.422 [.031]	0.027 [.044]	0.422 [.02]	0.436 [.023]	-0.014 [.031]
Previous public office	0.783 [.025]	0.869 [.021]	-0.086 [.033]**	0.803 [.016]	0.826 [.017]	-0.023 [.024]
Military	0.300 [.028]	0.295 [.029]	0.005 [.04]	0.316 [.019]	0.281 [.021]	0.035 [.028]
Lawyer	0.663 [.029]	0.596 [.031]	0.067 [.043]	0.611 [.02]	0.567 [.023]	0.044 [.031]
Farmer	0.042 [.012]	0.065 [.016]	-0.023 [.02]	0.062 [.01]	0.062 [.011]	0.000 [.015]
Business	0.272 [.028]	0.318 [.03]	-0.046 [.041]	0.292 [.019]	0.329 [.022]	-0.037 [.027]
Observations	251	267		477	588	

Sample: Individuals with no pre-relatives, who did not die in office, and who were born before 1910

Standard errors in brackets. * significant at 10%; ** significant at 5%; *** significant at 1%

Table 7: IV-RD First Stage

	Dependent Variable: Longterm					
	(1) 2.50%	(2) 2.50%	(3) 2.50%	(4) 5%	(5) 5%	(6) 5%
Win	0.85671 [0.08332]***	0.54542 [0.36102]	0.48855 [0.34155]	0.90842 [0.05078]***	0.56498 [0.16343]***	0.53381 [0.15742]***
Female*(1-Win)		-0.28485 [0.16346]*	-0.30062 [0.16208]*		-0.25325 [0.12338]**	-0.25486 [0.12287]**
College degree*(1-Win)		0.02928 [0.06800]	0.02143 [0.06610]		0.04147 [0.04448]	0.03663 [0.04367]
Outsider*(1-Win)		-0.0457 [0.06241]	-0.05481 [0.05523]		0.03192 [0.04400]	0.01537 [0.04465]
Previous public office*(1-Win)		0.0271 [0.09011]	0.00535 [0.09849]		-0.00656 [0.06727]	-0.02861 [0.06795]
Age at entry*(1-Win)		-0.00736 [0.00351]**	-0.00659 [0.00345]*		-0.00755 [0.00288]**	-0.00708 [0.00278]**
Age at death*(1-Win)		0.00001 [0.00247]	0.00051 [0.00237]		0.00033 [0.00134]	0.00054 [0.00122]
Military*(1-Win)		-0.02747 [0.06738]	-0.04003 [0.06389]		-0.00022 [0.04710]	-0.01112 [0.04447]
Farmer*(1-Win)		0.06941 [0.32986]	0.08244 [0.32392]		-0.07103 [0.13973]	-0.06207 [0.13991]
Lawyer*(1-Win)		-0.04137 [0.27508]	-0.03353 [0.26778]		-0.0623 [0.09118]	-0.05129 [0.09285]
Business*(1-Win)		0.01067 [0.29249]	-0.01011 [0.28394]		-0.05102 [0.10052]	-0.04707 [0.10104]
Prerelative*(1-Win)			-0.16462 [0.10055]			-0.13851 [0.08176]*
Constant	0.14329 [0.08332]*	0.45458 [0.36102]	0.51145 [0.34155]	0.09158 [0.05078]*	0.43502 [0.16343]**	0.46619 [0.15742]***
Region	Y	Y	Y	Y	Y	Y
Decade	Y	Y	Y	Y	Y	Y
Includes Members with Previous Relatives	N	N	Y	N	N	Y
Observations	518	506	551	1065	1047	1127
R-squared	0.65	0.66	0.67	0.68	0.69	0.69
F statistic	171.72	332.5	69.61	2996.79	5397.38	6170.15

Sample: Individuals who did not die in office and who were born before 1910

Standard errors clustered at state level in brackets. * significant at 10%; ** significant at 5%;

*** significant at 1%

Table 8: IV-RD Second Stage

	Dependent Variable: Postrelative					
	(1) 2.5%	(2) 2.5%	(3) 2.5%	(4) 5%	(5) 5%	(6) 5%
Longterm	0.04866 [0.02120]**	0.05235 [0.02297]**	0.04645 [0.02484]*	0.04214 [0.01220]***	0.04024 [0.01252]***	0.03086 [0.01781]*
Female		0.02772 [0.04288]	-0.0514 [0.07404]		0.0181 [0.02115]	-0.03367 [0.04819]
College degree		0.0608 [0.01870]***	0.04973 [0.01763]***		0.03954 [0.01450]***	0.03352 [0.01390]**
Outsider		0.01845 [0.02417]	0.01741 [0.02396]		-0.00996 [0.01694]	-0.01255 [0.01533]
Previous public office		0.01996 [0.01986]	0.00238 [0.02126]		-0.01095 [0.01936]	-0.01046 [0.02055]
Age at entry		-0.00089 [0.00130]	-0.00074 [0.00122]		-0.00053 [0.00088]	-0.0006 [0.00090]
Age at death		0.0003 [0.00103]	0.00029 [0.00100]		0.00013 [0.00069]	-0.00015 [0.00077]
Military		0.00157 [0.02297]	-0.016 [0.02584]		0.01881 [0.01594]	0.00958 [0.01508]
Farmer		0.02417 [0.04588]	0.04953 [0.04894]		-0.01533 [0.03819]	-0.0154 [0.03894]
Lawyer		0.0687 [0.03875]*	0.0725 [0.03831]*		0.00206 [0.02962]	0.00124 [0.03051]
Business		0.10496 [0.04554]**	0.10257 [0.04499]**		0.01457 [0.02894]	0.00613 [0.03034]
Prerelative			0.13129 [0.07202]*			0.16203 [0.05041]***
Constant	0.0072 [0.04453]	-0.11938 [0.05730]**	-0.08128 [0.07374]	0.00228 [0.02385]	-0.00489 [0.05694]	0.04613 [0.06501]
Region	Y	Y	Y	Y	Y	Y
Decade	Y	Y	Y	Y	Y	Y
Includes Members with Previous Relatives	N	N	Y	N	N	Y
Observations	518	506	551	1065	1047	1127

Sample: Individuals who did not die in office and who were born before 1910

Standard errors clustered at state level in brackets. * significant at 10%; ** significant at 5%;

*** significant at 1%

Table 9: IV-RD First Stage

Dependent Variable: Longterm

	(1)	(2)	(3)	(4)	(5)	(6)	(7)	(8)	(9)	(10)	(11)	(12)
	2.5%		2.5%		2.5%		5%		5%		5%	
	Total tenure	Total tenure^2	Total tenure	Total tenure^2	Total tenure	Total tenure^2	Total tenure	Total tenure^2	Total tenure	Total tenure^2	Total tenure	Total tenure^2
Win	0.91952	2.46301	2.09578	13.5333	2.14543	14.57344	1.55957	8.60396	0.88745	-8.7073	0.99698	-5.46495
	[0.37192]**	[3.29757]	[1.56576]	[16.14467]	[1.39629]	[15.28721]	[0.51354]***	[8.12704]	[1.39486]	[20.07919]	[1.39669]	[19.94512]
Female*(1-Win)			-0.85346	-2.47058	-0.18697	-0.26698			0.25157	18.29888	0.65911	17.69107
			[1.63394]	[18.17377]	[1.17766]	[14.40721]			[1.04577]	[15.19806]	[0.65042]	[9.97511]*
College degree*(1-Win)			-0.62977	-6.17468	-0.62398	-6.04478			-0.36366	-5.81533	-0.3064	-4.85652
			[0.37345]*	[3.97209]	[0.35523]*	[3.72070]			[0.22388]	[3.05807]*	[0.21969]	[2.93595]
Outsider*(1-Win)			0.19076	3.98504	0.11378	2.75672			0.45536	5.24759	0.38827	4.5581
			[0.47036]	[4.76448]	[0.42911]	[4.33027]			[0.36312]	[4.61614]	[0.32137]	[4.05981]
Previous public office*(1-Win)			-0.15446	-3.50687	-0.1689	-3.53089			-0.22921	-3.546	-0.33236	-4.56012
			[0.63461]	[9.48908]	[0.59487]	[8.66078]			[0.52572]	[7.27936]	[0.47787]	[6.60084]
Age at entry*(1-Win)			-0.01071	-0.23684	-0.0079	-0.21231			0.00047	0.10852	0.00072	0.09938
			[0.04168]	[0.49932]	[0.03870]	[0.46495]			[0.02773]	[0.42919]	[0.02567]	[0.40092]
Age at death*(1-Win)			0.00748	0.16224	0.0062	0.14196			-0.00734	-0.22054	-0.00529	-0.17494
			[0.01841]	[0.24962]	[0.01741]	[0.22882]			[0.01603]	[0.29628]	[0.01363]	[0.25666]
Military*(1-Win)			-0.38675	-8.44015	-0.30961	-7.00552			-0.36919	-4.93085	-0.40479	-5.44864
			[0.39069]	[5.23155]	[0.37282]	[4.82890]			[0.34357]	[4.35722]	[0.32930]	[4.16933]
Farmer*(1-Win)			2.31832	22.46085	2.11063	20.72462			-0.13025	-8.97806	-0.0139	-7.1373
			[1.76125]	[20.39928]	[1.70489]	[19.71728]			[0.93313]	[13.77190]	[0.90811]	[13.58363]
Lawyer*(1-Win)			1.94874	20.92147	2.05275	22.11254			0.28962	0.50258	0.32886	1.25326
			[1.37282]	[16.65534]	[1.35515]	[16.25085]			[0.80417]	[12.78674]	[0.82947]	[13.02907]
Business*(1-Win)			1.68579	19.4187	1.73311	20.06529			0.3067	2.09792	0.39328	3.33354
			[1.38873]	[15.50333]	[1.38288]	[15.43970]			[0.83700]	[11.89180]	[0.85748]	[12.09588]
Prerelative*(1-Win)					0.35082	3.75454					0.43939	6.88265
					[0.38440]	[4.41980]					[0.39856]	[4.49652]
Female			-0.8899	-17.1264	-1.53744	-18.8361			-1.62782	-32.48608	-1.97315	-31.0128
			[1.26464]	[13.67318]	[0.63574]**	[7.94717]**			[0.86762]*	[13.61543]**	[0.48382]***	[8.66274]***
College degree			0.72488	6.83562	0.70863	6.75522			0.4128	5.08273	0.37316	4.50663
			[0.20222]***	[1.81987]***	[0.20445]***	[1.88637]***			[0.17086]**	[2.44652]**	[0.16308]**	[2.25009]*
Outsider			0.04178	-0.91903	0.06283	-0.40667			-0.09626	-1.03868	-0.12783	-1.41325
			[0.30117]	[2.75092]	[0.27336]	[2.50683]			[0.19387]	[2.51324]	[0.17940]	[2.27444]

Table 9 Continued: IV-RD First Stage

	(1)	(2)	(3)	(4)	(5)	(6)	(7)	(8)	(9)	(10)	(11)	(12)
	2.5%		2.5%		2.5%		5%		5%		5%	
	Total tenure	Total tenure^2	Total tenure	Total tenure^2	Total tenure	Total tenure^2	Total tenure	Total tenure^2	Total tenure	Total tenure^2	Total tenure	Total tenure^2
Previous public office			0.32412	1.85593	0.31081	2.13175			0.4166	5.59844	0.40282	5.50927
			[0.24994]	[3.17701]	[0.22773]	[2.88226]			[0.23680]*	[3.73079]	[0.21001]*	[3.31148]
Age at entry			-0.04134	-0.40763	-0.04045	-0.39362			-0.07056	-0.97713	-0.06659	-0.91794
			[0.02665]	[0.30756]	[0.02473]	[0.28638]			[0.01542]***	[0.29048]***	[0.01410]***	[0.26915]***
Age at death			0.02064	0.25298	0.02022	0.24051			0.03914	0.66051	0.03602	0.59596
			[0.00998]**	[0.11881]**	[0.00964]**	[0.11478]**			[0.01162]***	[0.25427]**	[0.01032]***	[0.22442]**
Military			0.18733	4.06673	0.11984	3.06974			0.32076	4.19063	0.33917	4.68407
			[0.24334]	[3.07953]	[0.23488]	[2.88691]			[0.24411]	[3.29040]	[0.23506]	[3.12650]
Farmer			-2.09107	-21.57529	-1.83526	-19.51768			-0.25056	3.26882	-0.28007	2.37507
			[1.63213]	[20.35181]	[1.62287]	[20.05031]			[0.75909]	[12.46443]	[0.72241]	[12.15183]
Lawyer			-1.91417	-19.80559	-1.9923	-20.76657			-0.52406	-2.6361	-0.52518	-3.08716
			[1.27856]	[16.81483]	[1.29756]	[16.75531]			[0.71841]	[12.29849]	[0.72058]	[12.26489]
Business			-1.64618	-18.55955	-1.70171	-19.05244			-0.63366	-6.31587	-0.63442	-6.52715
			[1.25950]	[16.06092]	[1.27524]	[16.04406]			[0.64879]	[10.81173]	[0.64749]	[10.78996]
Prerelative					-1.04683	-9.99006					-0.83141	-9.74565
					[0.25083]***	[2.55438]***					[0.24496]***	[3.53353]***
Constant	1.3957	4.20446	1.4961	4.59122	1.59236	5.02575	1.44662	7.31738	2.3512	16.20704	2.30761	15.10713
	[0.31205]***	[3.15680]	[1.05083]	[9.03070]	[1.00779]	[8.96907]	[0.37006]***	[5.53817]	[0.80260]***	[10.17198]	[0.77121]***	[9.75853]
Region	Y	Y	Y	Y	Y	Y	Y	Y	Y	Y	Y	Y
Decade	Y	Y	Y	Y	Y	Y	Y	Y	Y	Y	Y	Y
Includes Members with Previous Relatives	N	N	N	N	Y	Y	N	N	N	N	Y	Y
Observations	518	518	506	506	551	551	1065	1065	1047	1047	1127	1127
R-squared	0.23	0.13	0.31	0.23	0.3	0.22	0.18	0.07	0.25	0.15	0.25	0.14
F statistic	50.59	22.54	63.1	69.11	87.52	82.23	81.45	63.19	107.92	41.79	148.86	23.93

Sample: Individuals who did not die in office and who were born before 1910

Standard errors clustered at state level in brackets. * significant at 10%; ** significant at 5%; *** significant at 1%

Table 10: IV-RD Second Stage

Dependent Variable: Prerelative

	(1) 2.5%	(2) 2.5%	(3) 2.5%	(4) 5%	(5) 5%	(6) 5%
Total tenure	0.04389 [0.02056]**	0.04008 [0.01670]**	0.04649 [0.01724]***	0.06265 [0.02024]***	0.03874 [0.01634]**	0.04362 [0.02629]
Total tenure^2	-0.00412 [0.00301]	-0.00317 [0.00183]*	-0.00457 [0.00199]**	-0.00677 [0.00281]**	-0.00363 [0.00207]*	-0.0049 [0.00346]
Female		0.02296 [0.04431]	-0.07036 [0.08466]		-0.00584 [0.03148]	-0.07419 [0.06235]
College degree		0.05733 [0.01884]***	0.04972 [0.01838]***		0.03995 [0.01574]**	0.03586 [0.01550]**
Outsider		0.01515 [0.02406]	0.01417 [0.02365]		-0.00893 [0.01731]	-0.0113 [0.01549]
Previous public office		0.01238 [0.01938]	-0.00395 [0.02151]		-0.0081 [0.01974]	-0.00387 [0.02074]
Age at entry		-0.00091 [0.00137]	-0.00115 [0.00135]		-0.00134 [0.00111]	-0.00214 [0.00137]
Age at death		0.0004 [0.00109]	0.00067 [0.00102]		0.00079 [0.00074]	0.00094 [0.00089]
Military		0.00023 [0.02132]	-0.01702 [0.02411]		0.02081 [0.01631]	0.01502 [0.01629]
Farmer		0.02856 [0.04984]	0.04378 [0.05355]		-0.00764 [0.03467]	-0.00691 [0.03568]
Lawyer		0.07741 [0.04232]*	0.07252 [0.04210]*		0.00728 [0.03106]	0.0049 [0.03544]
Business		0.11033 [0.04282]**	0.10067 [0.04473]**		0.01313 [0.02985]	0.00111 [0.03441]
Prerelative			0.12829 [0.07201]*			0.1552 [0.04828]***
Constant	-0.02254 [0.04935]	-0.14825 [0.06506]**	-0.11686 [0.08224]	-0.03573 [0.03402]	-0.04263 [0.05987]	0.00393 [0.07102]
Region	Y	Y	Y	Y	Y	Y
Decade	Y	Y	Y	Y	Y	Y
Includes Members with Previous Relatives	N	N	Y	N	N	Y
TE(2-1)	0.03153	0.03057	0.03278	0.04234	0.02785	0.02892
TE(2-1) p-value	0.0196	0.0166	0.0136	0.0014	0.0117	0.0844
Observations	518	506	551	1065	1047	1127

Sample: Individuals who did not die in office and who were born before 1910

Standard errors clustered at state level in brackets. * significant at 10%; ** significant at 5%;

*** significant at 1%

Table 11: IV First Stage

	Dependent Variable: Longterm					
	(1) 25%	(2) 25%	(3) 25%	(4) 25%	(5) 40%	(6) 40%
Win	0.79903 [0.05702]***	0.61653 [0.12186]***	0.61233 [0.11532]***	0.61633 [0.11800]***	0.81931 [0.04735]***	0.63553 [0.11639]***
Female*(1-Win)		-0.02087 [0.15393]	-0.01643 [0.15376]	0.02805 [0.15530]		-0.02881 [0.15354]
College degree*(1-Win)		0.04484 [0.02479]*	0.04312 [0.02435]*	0.02182 [0.03032]		0.04749 [0.02213]**
Outsider*(1-Win)		0.0039 [0.02535]	-0.00692 [0.02501]	0.01159 [0.03176]		-0.00573 [0.02557]
Previous public office*(1-Win)		-0.00114 [0.03426]	-0.01717 [0.03270]	-0.02243 [0.03318]		0.0019 [0.03380]
Age at entry*(1-Win)		-0.007 [0.00188]***	-0.00619 [0.00184]***	-0.00652 [0.00184]***		-0.00673 [0.00178]***
Age at death*(1-Win)		0.00181 [0.00108]	0.00168 [0.00102]	0.00211 [0.00099]**		0.00187 [0.00113]
Military*(1-Win)		-0.01028 [0.02851]	-0.01155 [0.02789]	-0.02141 [0.02620]		-0.01219 [0.02569]
Farmer*(1-Win)		-0.02759 [0.07866]	-0.00965 [0.07747]	-0.04892 [0.08458]		-0.05809 [0.07530]
Lawyer*(1-Win)		-0.03565 [0.05404]	-0.03083 [0.05226]	-0.04182 [0.04743]		-0.05588 [0.05357]
Business*(1-Win)		-0.00991 [0.06924]	-0.0082 [0.06660]	-0.01791 [0.06536]		-0.01894 [0.07036]
Prerelative*(1-Win)			-0.06206 [0.04538]			
Constant	0.20097 [0.05702]***	0.38347 [0.12186]***	0.38767 [0.11532]***	0.38367 [0.11800]***	0.18069 [0.04735]***	0.36447 [0.11639]***
Region	Y	Y	Y	N	Y	Y
Decade	Y	Y	Y	N	Y	Y
Margin of votes quartic	Y	Y	Y	Y	Y	Y
Includes Members with Previous Relatives	N	N	Y	N	N	N
State	N	N	N	Y	N	N
Year	N	N	N	Y	N	N
Observations	3095	3034	3295	3034	3605	3537
R-squared	0.77	0.77	0.78	0.81	0.78	0.78
F statistic	2134.44	9427.11	17234.85	11678.95	2790	10522.46

Sample: Individuals who did not die in office and who were born before 1910

Standard errors clustered at state level in brackets. * significant at 10%; ** significant at 5%;

*** significant at 1%

Table 12: IV-RD Second Stage

	Dependent Variable: Postrelative						
	(1) 25%	(2) 25%	(3) 25%	(4) 25%	(5) 25%	(6) 40%	(7) 40%
Longterm	0.06428 [0.02092]***	0.06244 [0.02144]***	0.05028 [0.02590]*	0.05425 [0.02378]**	0.04669 [0.01572]***	0.05154 [0.02179]**	0.04661 [0.02025]**
Female		0.05354 [0.06678]	0.0244 [0.06347]	0.02568 [0.06390]	0.04652 [0.06903]		0.04601 [0.05927]
College degree		0.01261 [0.00895]	0.01251 [0.01013]	0.01247 [0.01008]	0.00974 [0.00862]		0.01086 [0.00862]
Outsider		-0.00002 [0.00776]	-0.00051 [0.00823]	-0.00054 [0.00824]	0.00284 [0.00698]		0.00104 [0.00649]
Previous public office		0.00405 [0.00798]	0.00513 [0.00838]	0.00509 [0.00837]	-0.00139 [0.00868]		0.00002 [0.00826]
Age at entry		0.00035 [0.00044]	0.00017 [0.00048]	0.00016 [0.00049]	0.00035 [0.00046]		0.0001 [0.00038]
Age at death		-0.00007 [0.00039]	0.00001 [0.00042]	0.00002 [0.00042]	-0.00003 [0.00035]		-0.00026 [0.00037]
Military		0.00124 [0.00914]	-0.00874 [0.00942]	-0.00891 [0.00939]	-0.00129 [0.00864]		-0.00028 [0.00806]
Farmer		-0.01667 [0.02462]	-0.01936 [0.02303]	-0.01872 [0.02313]	-0.01809 [0.02549]		-0.01933 [0.02122]
Lawyer		0.00569 [0.01686]	0.00172 [0.01711]	0.0015 [0.01722]	0.00915 [0.01649]		0.00683 [0.01386]
Business		0.00656 [0.01498]	-0.00028 [0.01664]	-0.00025 [0.01671]	0.00964 [0.01390]		0.00809 [0.01266]
Prerelative			0.12522 [0.02491]***	0.1586 [0.04298]***			
Longterm*Prerelative				-0.04286 [0.05414]			
Constant	0.00378 [0.01795]	-0.02199 [0.03033]	-0.00047 [0.04052]	-0.00301 [0.04026]	-0.05288 [0.03321]	0.01557 [0.01973]	0.02078 [0.03417]
Region	Y	Y	Y	Y	N	Y	Y
Decade	Y	Y	Y	Y	N	Y	Y
Margin of votes quartic	Y	Y	Y	Y	Y	Y	Y
Includes Members with Previous Relatives	N	N	Y	N	N	N	N
State	N	N	N	Y	Y	N	N
Year	N	N	N	Y	Y	N	N
Observations	3095	3034	3295	3295	3034	3605	3537

Sample: Individuals who did not die in office and who were born before 1910

Standard errors clustered at state level in brackets. * significant at 10%; ** significant at 5%;

*** significant at 1%

Table 13: IV-RD First Stage

	Dependent Variable: Total Tenure											
	(1)	(2)	(3)	(4)	(5)	(6)	(7)	(8)	(9)	(10)	(11)	(12)
	25%	25%	25%	25%	25%	25%	25%	25%	40%	40%	40%	40%
	Total tenure	Total tenure^2	Total tenure	Total tenure^2	Total tenure	Total tenure^2	Total tenure	Total tenure^2	Total tenure	Total tenure^2	Total tenure	Total tenure^2
Win	1.12002	3.33391	1.04425	-2.88729	1.19229	0.0549	0.51033	-8.20437	0.94211	-0.88898	0.4789	-10.64449
	[0.30023]***	[3.18625]	[1.06768]	[15.42783]	[1.00530]	[14.53174]	[1.27449]	[18.03092]	[0.32513]***	[4.58743]	[0.90433]	[12.12421]
Female*(1-Win)			0.92848	19.5052	1.40967	22.91289	-0.91441	-8.47021			0.66582	13.88848
			[0.75933]	[10.14804]*	[0.69656]**	[8.42555]***	[1.04060]	[14.02170]			[0.71404]	[9.28755]
College degree*(1-Win)			0.10332	0.21104	0.13719	1.03087	-0.55806	-7.90334			0.04939	-0.23922
			[0.13182]	[1.94227]	[0.12502]	[1.93594]	[0.18957]***	[2.68442]***			[0.10712]	[1.55552]
Outsider*(1-Win)			0.04393	1.19729	0.00174	0.71249	0.12279	1.66126			-0.09507	-0.75447
			[0.19837]	[2.99195]	[0.18422]	[2.80373]	[0.18463]	[2.39974]			[0.19408]	[2.73228]
Previous public office*(1-Win)			-0.35738	-5.45879	-0.4624	-6.42205	-0.46656	-6.46503			-0.32983	-4.77777
			[0.23893]	[3.26835]	[0.22754]**	[3.03956]**	[0.23406]*	[3.05024]**			[0.23424]	[3.07280]
Age at entry*(1-Win)			0.03657	0.79053	0.04194	0.85544	0.01781	0.56789			0.04507	0.91587
			[0.01281]***	[0.21829]***	[0.01220]***	[0.21590]***	[0.01266]	[0.21160]***			[0.01188]***	[0.20507]***
Age at death*(1-Win)			-0.03231	-0.68966	-0.03136	-0.66385	-0.04145	-0.81812			-0.0396	-0.77991
			[0.00865]***	[0.14965]***	[0.00828]***	[0.14680]***	[0.00912]***	[0.15976]***			[0.00789]***	[0.13937]***
Military*(1-Win)			-0.0896	-1.38218	-0.0914	-1.15266	-0.19128	-2.21984			-0.03411	-0.62992
			[0.18837]	[3.27875]	[0.18125]	[3.12115]	[0.21971]	[3.36035]			[0.17054]	[2.91888]
Farmer*(1-Win)			1.28372	17.01584	1.39736	17.68231	1.78375	24.15491			1.19345	16.76935
			[0.58780]**	[9.83604]*	[0.55086]**	[9.33838]*	[0.64861]***	[10.51682]**			[0.57410]**	[9.08138]*
Lawyer*(1-Win)			0.7956	11.4737	0.86948	11.9149	1.64754	22.87222			0.60765	9.54785
			[0.47761]	[9.00211]	[0.46468]*	[8.73447]	[0.53926]***	[9.81558]**			[0.48160]	[8.23452]
Business*(1-Win)			0.84773	11.12923	0.95854	12.43353	1.47012	19.28411			0.70488	9.88851
			[0.48871]*	[9.13164]	[0.47324]**	[8.83351]	[0.54948]**	[9.76624]*			[0.49519]	[8.24582]
Prerelative*(1-Win)					-0.09516	-0.77686						
					[0.30175]	[4.52873]						
Female			-1.35529	-24.40739	-1.80573	-27.51341	-0.01088	-7.05415			-1.1617	-19.50442
			[0.69797]*	[9.97567]**	[0.59275]***	[8.25808]***	[0.90207]	[11.28379]			[0.67219]*	[9.21990]**
College degree			0.05566	0.86696	0.03237	0.18584	0.6019	7.78092			0.14139	1.61836
			[0.11182]	[1.86618]	[0.10772]	[1.88530]	[0.13589]***	[2.29553]***			[0.09850]	[1.57842]
Outsider			-0.01284	-0.92412	-0.01586	-0.84388	-0.1612	-2.48309			0.11924	1.12285
			[0.12755]	[2.44334]	[0.12365]	[2.31839]	[0.12134]	[1.97521]			[0.12057]	[2.16540]

Table 13 Continued: IV-RD First Stage

	(1)	(2)	(3)	(4)	(5)	(6)	(7)	(8)	(9)	(10)	(11)	(12)
	25%		25%		25%		25%		40%		40%	
	Total tenure	Total tenure^2	Total tenure	Total tenure^2	Total tenure	Total tenure^2	Total tenure	Total tenure^2	Total tenure	Total tenure^2	Total tenure	Total tenure^2
Previous public office			0.46234	6.82349	0.4998	7.30712	0.40571	5.84932			0.42784	6.04679
			[0.11253]***	[1.50055]***	[0.10854]***	[1.43852]***	[0.14264]***	[1.78927]***			[0.11459]***	[1.63251]***
Age at entry			-0.0825	-1.33253	-0.08388	-1.35478	-0.0628	-1.09115			-0.08828	-1.42257
			[0.00805]***	[0.16998]***	[0.00829]***	[0.17506]***	[0.00798]***	[0.16226]***			[0.00753]***	[0.15876]***
Age at death			0.05473	0.97525	0.05229	0.93218	0.0665	1.12853			0.06036	1.04288
			[0.00793]***	[0.15184]***	[0.00785]***	[0.15047]***	[0.00825]***	[0.16129]***			[0.00701]***	[0.13977]***
Military			0.07414	1.61234	0.06902	1.30025	0.16762	2.88342			0.04199	1.144
			[0.11777]	[2.52643]	[0.11365]	[2.35266]	[0.13830]	[2.30482]			[0.09730]	[2.13886]
Farmer			-1.18179	-16.2942	-1.23419	-16.57487	-1.72143	-23.70934			-1.21722	-16.93752
			[0.46817]**	[8.94043]*	[0.44454]***	[8.54781]*	[0.48422]***	[9.12760]**			[0.42558]***	[8.00515]**
Lawyer			-0.75476	-10.48146	-0.82566	-10.96774	-1.56607	-21.25185			-0.68838	-9.65186
			[0.41298]*	[8.39051]	[0.40086]**	[8.11800]	[0.45133]***	[8.83872]**			[0.36447]*	[7.35326]
Business			-0.68735	-9.06667	-0.77162	-10.08823	-1.27576	-16.94754			-0.66748	-9.07383
			[0.41163]	[8.38764]	[0.39750]*	[8.09490]	[0.43788]***	[8.84076]*			[0.36932]*	[7.21795]
Prerelative					-0.11535	-1.15917						
					[0.21605]	[3.99911]						
Constant	1.5023	5.1262	1.76935	6.85696	1.72701	6.1971	1.73492	4.9365	1.51652	6.4568	1.87354	8.99958
	[0.23154]***	[2.35501]**	[0.45416]***	[4.84678]	[0.40923]***	[4.43035]	[0.65027]**	[7.69299]	[0.23795]***	[2.91926]**	[0.46880]***	[4.80306]*
Region	Y	Y	Y	Y	Y	Y	N	N	Y	Y	Y	Y
Decade	Y	Y	Y	Y	Y	Y	N	N	Y	Y	Y	Y
Margin of Votes quartic	Y	Y	Y	Y	Y	Y	Y	Y	Y	Y	Y	Y
Includes Members with Previous Relatives	N	N	N	N	Y	Y	N	N	N	N	N	N
State	N	N	N	N	N	N	Y	Y	N	N	N	N
Year	N	N	N	N	N	N	Y	Y	N	N	N	N
Observations	3095	3095	3034	3034	3295	3295	3034	3034	3605	3605	3537	3537
R-squared	0.24	0.11	0.3	0.17	0.3	0.17	0.27	0.15	0.26	0.12	0.33	0.19
F statistic	26.66	13.57	37.6	24.99	49.04	25.3	250000	11571.8	37.51	34.66	54.55	42.93

Sample: Individuals who did not die in office and who were born before 1910

Standard errors clustered at state level in brackets. * significant at 10%; ** significant at 5%; *** significant at 1%

Table 14: IV-RD Second Stage

	Dependent Variable: Postrelative						
	(1) 25%	(2) 25%	(3) 25%	(4) 25%	(5) 25%	(6) 40%	(7) 40%
Total tenure	0.04981 [0.01673]***	0.0334 [0.01372]**	0.02905 [0.01688]*	0.0303 [0.01560]*	0.02428 [0.01166]**	0.03942 [0.01692]**	0.02231 [0.01157]*
Total tenure^2	-0.00414 [0.00149]***	-0.00224 [0.00111]**	-0.00217 [0.00143]	-0.00229 [0.00134]*	-0.00182 [0.00092]*	-0.00376 [0.00147]**	-0.00194 [0.00087]**
Female		0.04914 [0.06253]	0.01999 [0.05911]	0.02061 [0.05887]	0.03946 [0.06644]		0.03743 [0.05502]
College degree		0.01258 [0.00914]	0.01203 [0.01049]	0.01211 [0.01051]	0.0096 [0.00881]		0.01104 [0.00868]
Outsider		-0.00126 [0.00812]	-0.00165 [0.00832]	-0.00191 [0.00813]	0.00312 [0.00729]		0.00053 [0.00687]
Previous public office		0.00368 [0.00779]	0.00603 [0.00870]	0.00584 [0.00897]	-0.0015 [0.00874]		0.00145 [0.00799]
Age at entry		0.00018 [0.00068]	-0.00022 [0.00069]	-0.00028 [0.00069]	0.00007 [0.00058]		-0.00055 [0.00067]
Age at death		0.00017 [0.00049]	0.00038 [0.00049]	0.00043 [0.00050]	0.00026 [0.00043]		0.00026 [0.00050]
Military		0.0023 [0.00874]	-0.00786 [0.00901]	-0.00803 [0.00903]	-0.00089 [0.00858]		0.00095 [0.00769]
Farmer		-0.01674 [0.02569]	-0.0209 [0.02452]	-0.02073 [0.02481]	-0.01979 [0.02684]		-0.02404 [0.02229]
Lawyer		0.00624 [0.01785]	0.0015 [0.01824]	0.00102 [0.01842]	0.00868 [0.01699]		0.00457 [0.01573]
Business		0.00755 [0.01568]	-0.00033 [0.01726]	0.00001 [0.01778]	0.00802 [0.01421]		0.00627 [0.01425]
Prerelative			0.12615 [0.02468]***	0.11709 [0.03007]***			
Prerelative*Total tenure				0.05075 [0.07630]			
Prerelative*Total tenure^2				-0.00979 [0.02365]			
Constant	-0.03229 [0.02825]	-0.04693 [0.03545]	-0.02364 [0.04562]	-0.02628 [0.04439]	-0.06578 [0.03958]	-0.01285 [0.03282]	0.00786 [0.03823]
Region	Y	Y	Y	Y	N	Y	Y
Decade	Y	Y	Y	Y	N	Y	Y
Margin of votes quartic	Y	Y	Y	Y	Y	Y	Y
Includes Members with Previous Relatives	N	N	Y	N	N	N	N
State	N	N	N	N	Y	N	N
Year	N	N	N	N	Y	N	N
TE(2-1)	0.03739	0.02668	0.02254	0.02343	0.01882	0.02814	0.01649
TE(2-1) p-value	0.0046	0.0173	0.0881	0.0557	0.0484	0.0331	0.086
Observations	3095	3034	3295	3295	3034	3605	3537

Sample: Individuals who did not die in office and who were born before 1910

Standard errors clustered at state level in brackets. * significant at 10%; ** significant at 5%;

*** significant at 1%

Table 15: IV First Stage for External Shocks Instrumental Variables Approach

	Dependent Variable: Longterm				
	(1)	(2)	(3)	(4)	(5)
Re-Election Instrument	0.37946 [.02054]***	0.3351 [.02198]***	0.33607 [.023]***	0.3315 [.02236]***	0.33372 [.02326]***
Constant	0.54733 [.11524]***	0.49868 [.22981]***	0.49785 [.22912]**	0.50138 [.23029]**	0.49971 [.22964]**
State/Quarter Interaction	Y	N	N	N	N
State/Decade Interaction	N	Y	Y	Y	Y
Includes Members with Previous Relatives	Y	Y	N	Y	N
Relatives Only Enter 10 Years or More Later	N	N	N	Y	Y
Observations	7359	7359	6734	7182	6639
F-Stat	179	90	98	88	95
R-Squared	0.127	0.161	0.173	0.16	0.172

Sample: Individuals who did not die in office and who were born before 1910

Standard errors clustered at state level in brackets. * significant at 10%; ** significant at 5%;

*** significant at 1%

Table 16: IV Second Stage for External Shocks Instrumental Variables Approach

	Dependent Variable: Postrelative				
	(1)	(2)	(3)	(4)	(5)
Longterm	0.05863 [.02618]**	0.07286 [.03319]**	0.03923 [.02874]	0.05779 [.02734]**	0.04374 [.02393]*
Constant	0.26487 [.02128]***	0.19535 [.02489]***	0.22058 [.02156]***	0.20666 [.02051]***	0.21272 [.01795]***
State/Quarter Interaction	Y	N	N	N	N
State/Decade Interaction	N	Y	Y	Y	Y
Includes Members with Previous Relatives	Y	Y	N	Y	N
Relatives Only Enter 10 Years or More Later	N	N	N	Y	Y
Observations	7359	7359	6734	7182	6639
R-Squared	0.091	0.121	0.242	0.111	0.112

Sample: Individuals who did not die in office and who were born before 1910

Standard errors clustered at state level in brackets. * significant at 10%; ** significant at 5%;

*** significant at 1%

Table 17: The Impact of Political Competition

	Dependent Variable: Prerelative			
	(1)	(2)	(3)	(4)
Political Competition	0.1851 [.074]**	.1986 [.0747]***		
Political Competition ^ 2	.535 [.1639]***	.5464 [.1667]***		
20th-40th Percentile of Political Competition			-.0181 [.0174]	-.0179 [.0186]
40th-60th Percentile of Political Competition			-.0378 [.016]**	-.0383 [.017]**
60th-80th Percentile of Political Competition			-.0351 [.0167]**	-.0347 [.0176]*
80th-100th Percentile of Political Competition			-.0303 [.0174]*	-.0286 [.019]
Year Effects	Y	Y	Y	Y
State Effects	Y	Y	Y	Y
Excluding first 30 years of statehood	N	Y	N	Y
Observations	6417	6139	6374	6096

Sample: Individuals who did not die in office and who were born before 1910

Standard errors clustered at state level in brackets. * significant at 10%; ** significant at 5%;

*** significant at 1%

Table A1: Sample of the major types of family relationships

Relationship	Count	Percent	Cumulative
Parent	267	16.29	16.29
Child	398	24.28	40.57
Grandparent	45	2.75	43.32
Grandchild	81	4.94	48.26
Uncle / Aunt	101	6.16	54.42
Nephew / Nice	149	9.09	63.51
Brother / Sister	293	17.88	81.39
Cousin	148	9.03	90.42
Husband	34	2.07	92.5
Wife or Widow	32	1.95	94.45
Other	90	5.55	100
Total	1,639	100	

Table A2: Summary statistics—all data

Variable	Obs	Mean	Std. Dev.	Min	Max
Previous relative in office	11455	0.087	0.28	0	1
Posterior relative in office	11455	0.085	0.28	0	1
Long term	11455	0.651	0.48	0	1
Total tenure	11455	3.73	3.54	1	29
Age at death	10205	69.98	12.78	27	103
Age at entry	11455	43.87	9.25	21	86
Previous public office	11455	0.806	0.40	0	1
College degree	11455	0.651	0.48	0	1
Female	11455	0.015	0.12	0	1
Outsider to state	11455	0.392	0.49	0	1
House (vs. Senate)	11455	0.891	0.31	0	1
Military	11455	0.356	0.48	0	1
Lawyer	10950	0.594	0.49	0	1
Farmer	10950	0.072	0.26	0	1

Table A3: Notable Families in Congress

Family Name	Year Enter	Year Leave	Number of Congresses	Number of Members	Notable Members
Adams	1803	1862	16	3	John Quincy Adams
Aldrich	1876	Present	32	5	Nelson Wilmarth Aldrich
Breckinridge	1789	1978	72	17	Henry Clay
Bryan	1895	1976	15	3	William Jennings Bryan
Burr	1791	1806	4	2	Aaron Burr
Bush	1951	1970	8	2	George H.W. Bush
Du Pont	1905	1928	9	2	Henry Algernon Du Pont
Frelinghuysen	1793	Present	25	6	
Gore	1939	1992	24	2	Albert Arnold Gore Jr.
Harrison	1793	1968	24	8	William Henry Harrison
Hearst	1885	1906	5	2	William Randolph Hearst
Hiester	1789	1880	38	12	
Houston	1823	1942	12	3	Samuel Houston
Kennedy	1895	Present	37	6	John Fitzgerald Kennedy
Lodge	1887	1952	37	4	Henry Cabot Lodge
Monroe	1789	1840	4	2	James Monroe
Morris	1789	1802	4	2	Robert Morris
Pelosi	1939	Present	10	2	Nancy Pelosi
Roosevelt	1949	1966	9	2	Franklin Delano Roosevelt Jr.

Note: Sometimes the family names are not consistent within families. For example Henry Clay came from a family where the predominant last name was Breckinridge. For ease of exposition we chose the modal last name.

Table A4: IV-RD Estimates for Longterm on Each Observable at the Region Decade Level

	Window size - margin of votes								
	(1) 2.5%	(2) 5%	(3) 10%	(4) 25%	(5) 40%	(6) 55%	(7) 70%	(8) 85%	(9) 98%
Postrelative	0.07995 [0.06499]	0.05133 [0.04153]	0.04352 [0.02601]	0.06279 [0.02182]***	0.0457 [0.02035]**	0.0427 [0.01547]***	0.03628 [0.01535]**	0.03685 [0.01483]**	0.03021 [0.01174]**
Lawyer	0.00245 [0.02687]	0.01926 [0.03013]	0.02399 [0.01878]	0.01315 [0.01514]	0.01886 [0.01543]	0.01518 [0.01445]	0.01439 [0.01404]	0.0171 [0.01328]	0.0183 [0.01241]
Previous public office	-0.13921 [0.08105]*	-0.16214 [0.05324]***	-0.15942 [0.06247]**	-0.0751 [0.03887]*	-0.06215 [0.02976]**	-0.03797 [0.02871]	-0.02758 [0.02522]	-0.03022 [0.02434]	-0.02964 [0.02659]
Female	0.00439 [0.01732]	0.01287 [0.01422]	0.00077 [0.01084]	0.0026 [0.00745]	0.00599 [0.00647]	0.00316 [0.00520]	0.00205 [0.00466]	0.0014 [0.00446]	-0.00005 [0.00396]
Outsider	0.07295 [0.12040]	0.10164 [0.08714]	0.01957 [0.08995]	-0.05671 [0.05570]	-0.0451 [0.05083]	-0.07267 [0.04571]	-0.05589 [0.04135]	-0.07351 [0.04027]*	-0.0638 [0.03769]*
Age at entry	-0.20201 [1.71396]	0.60739 [1.02209]	0.16625 [0.76202]	0.47087 [0.56419]	0.21818 [0.57378]	0.05975 [0.54186]	0.04388 [0.56528]	-0.04264 [0.47285]	-0.29942 [0.45359]
College graduate	-0.2218 [0.10237]**	-0.07546 [0.08851]	-0.11612 [0.07317]	-0.01058 [0.04784]	0.01645 [0.03805]	0.04328 [0.03221]	0.04063 [0.03113]	0.01915 [0.03181]	0.01328 [0.02785]
Military	-0.03016 [0.13702]	-0.00517 [0.08989]	0.00164 [0.06760]	0.03332 [0.03698]	0.0474 [0.03527]	0.03963 [0.03697]	0.03769 [0.03586]	0.02438 [0.03454]	0.03712 [0.03381]
Farmer	-0.00246 [0.03015]	-0.01365 [0.02571]	-0.00221 [0.02089]	-0.00318 [0.01581]	0.00053 [0.01481]	0.00197 [0.01182]	-0.00248 [0.01163]	0.00244 [0.01089]	0.0059 [0.01075]
Business	-0.03016 [0.13702]	-0.00517 [0.08989]	0.00164 [0.06760]	0.03332 [0.03698]	0.0474 [0.03527]	0.03963 [0.03697]	0.03769 [0.03586]	0.02438 [0.03454]	0.03712 [0.03381]
Region	Y	Y	Y	Y	Y	Y	Y	Y	Y
Decade	Y	Y	Y	Y	Y	Y	Y	Y	Y
Margin of votes quartic	Y	Y	Y	Y	Y	Y	Y	Y	Y
Observations	505	1048	1807	3042	3545	3774	3885	3928	4041

Sample: Individuals who did not die in office and who were born before 1910

Standard errors clustered at state level in brackets. * significant at 10%; ** significant at 5%; *** significant at 1%

Table A5: IV-RD Estimates for Longterm on Each Observable at the State Year Level

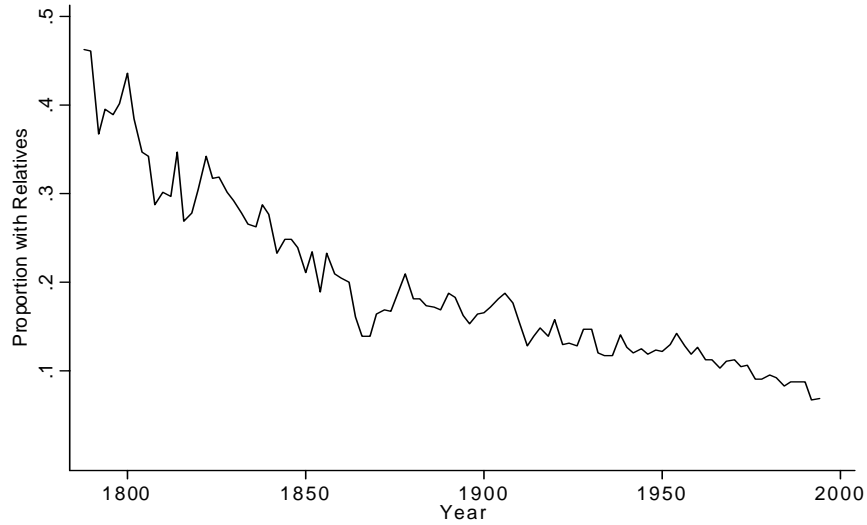
	Window size - margin of votes								
	(1) 2.50%	(2) 5%	(3) 10%	(4) 25%	(5) 40%	(6) 55%	(7) 70%	(8) 85%	(9) 98%
Postrelative	0.05895 [0.05952]	0.02305 [0.03960]	0.02925 [0.02431]	0.04684 [0.01579]***	0.02796 [0.01614]*	0.02747 [0.01457]*	0.02139 [0.01481]	0.02416 [0.01389]*	0.01735 [0.01021]*
Lawyer	0.0021 [0.01302]	0.00888 [0.01971]	0.01533 [0.01898]	0.01709 [0.01613]	0.0136 [0.01784]	0.01341 [0.01506]	0.0137 [0.01352]	0.01649 [0.01269]	0.01676 [0.01229]
Previous public office	-0.13623 [0.09432]	-0.07336 [0.05633]	-0.10989 [0.05188]**	-0.03618 [0.03318]	-0.03126 [0.02812]	-0.02261 [0.02865]	-0.00967 [0.02636]	-0.01507 [0.02691]	-0.01642 [0.02720]
Female	-0.00119 [0.01529]	0.00843 [0.01236]	-0.00038 [0.01095]	0.00084 [0.00863]	0.00409 [0.00690]	0.00316 [0.00526]	0.00227 [0.00474]	0.00176 [0.00443]	0.00076 [0.00400]
Outsider	0.03347 [0.08564]	0.1192 [0.07269]	0.05337 [0.06739]	-0.03462 [0.05070]	-0.03067 [0.04428]	-0.05222 [0.04054]	-0.04546 [0.03716]	-0.0574 [0.03658]	-0.04878 [0.03323]
Age at entry	-3.30137 [2.62545]	-0.44272 [1.34836]	-2.14305 [0.78641]***	-0.46352 [0.71851]	-0.29597 [0.64041]	-0.22054 [0.57228]	-0.15511 [0.57079]	-0.42819 [0.51280]	-0.57877 [0.45808]
College graduate	-0.0191 [0.06165]	-0.01422 [0.07095]	-0.10707 [0.06387]	0.00469 [0.04383]	0.02973 [0.03551]	0.04302 [0.02980]	0.04186 [0.03022]	0.02328 [0.03260]	0.0182 [0.02945]
Military	-0.05183 [0.12290]	0.02975 [0.07440]	0.01847 [0.06208]	0.02917 [0.03900]	0.04457 [0.03254]	0.04296 [0.03376]	0.04343 [0.03043]	0.03399 [0.02919]	0.04612 [0.02908]
Farmer	0.00704 [0.02071]	-0.02115 [0.01705]	-0.00584 [0.02195]	0.00457 [0.01683]	-0.00056 [0.01610]	0.00233 [0.01243]	-0.00244 [0.01158]	0.00304 [0.01091]	0.00525 [0.01129]
Business	-0.01106 [0.01188]	-0.01179 [0.01923]	0.00338 [0.01852]	0.0069 [0.01707]	0.00646 [0.01748]	0.00443 [0.01396]	0.0067 [0.01235]	0.00879 [0.01122]	0.00907 [0.01056]
State	Y	Y	Y	Y	Y	Y	Y	Y	Y
Year	Y	Y	Y	Y	Y	Y	Y	Y	Y
Margin of votes quartic	Y	Y	Y	Y	Y	Y	Y	Y	Y
Observations	505	1048	1807	3042	3545	3774	3885	3928	4041

Sample: Individuals who did not die in office and who were born before 1910

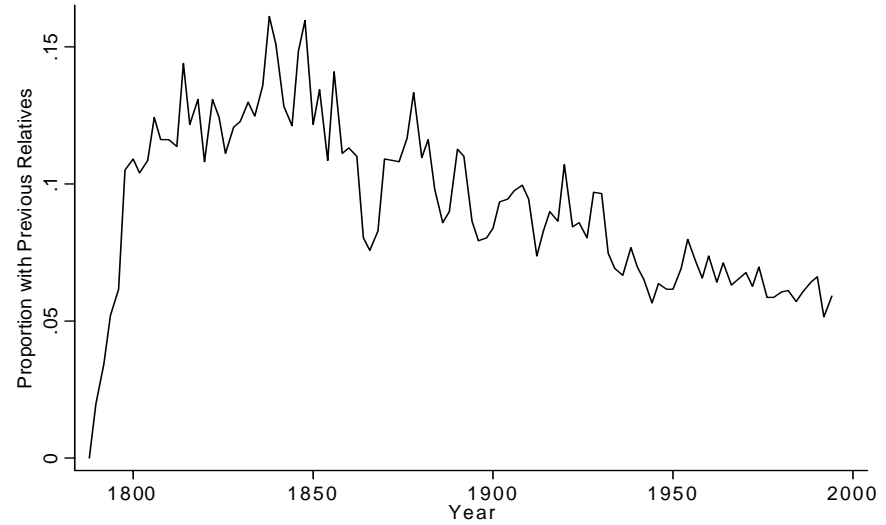
Standard errors clustered at state level in brackets. * significant at 10%; ** significant at 5%; *** significant at 1%

Figure 1: Trends in Congressmen with Relatives

A: Proportion of Legislators with Relatives



B: Proportion of Legislators with Previous Relatives



C: Proportion of Legislators with Posterior Relatives

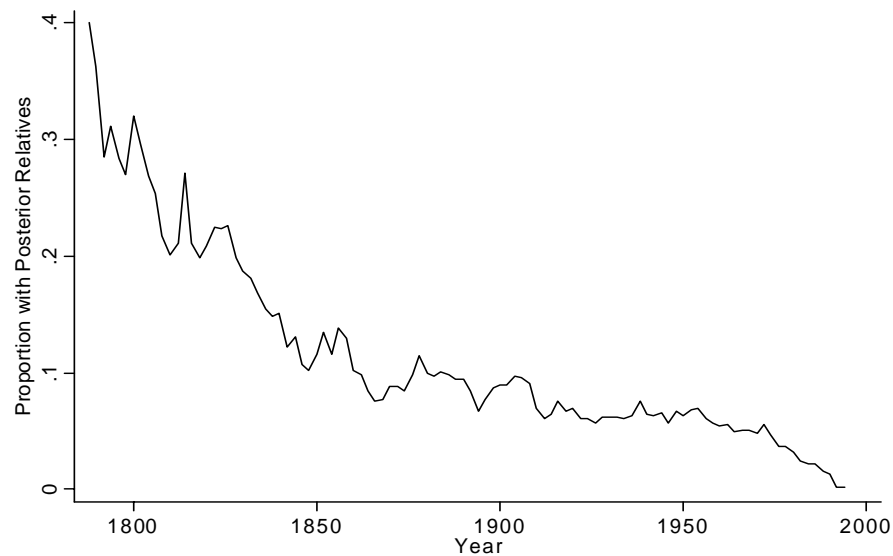
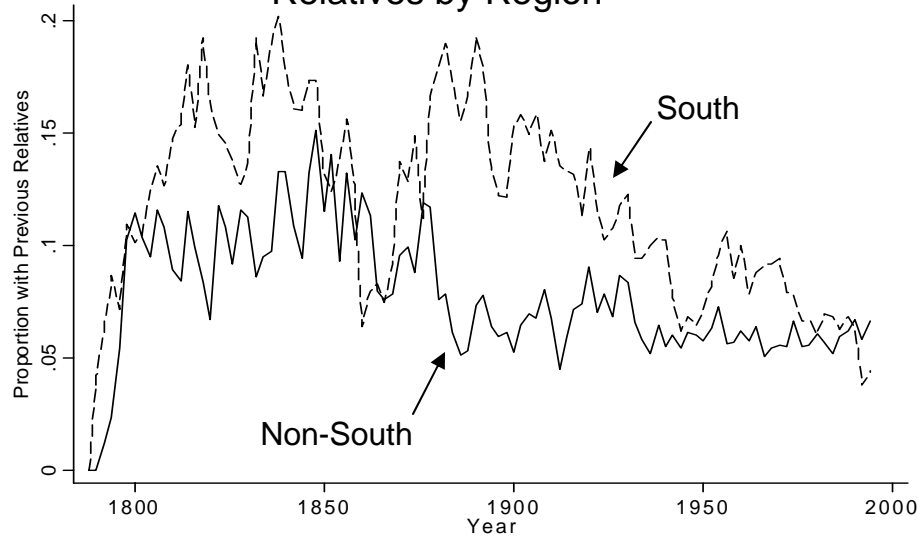
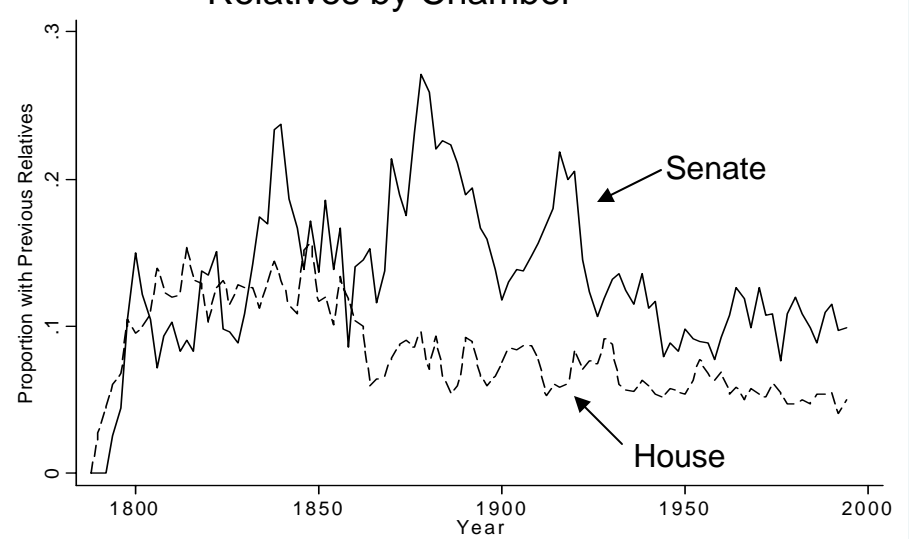


Figure 2: Trends in Congressmen with Previous Relatives

A: Proportion of Legislators with Previous Relatives by Region



B: Proportion of Legislators with Previous Relatives by Chamber



C: Proportion of Legislators with Previous Relatives by Party

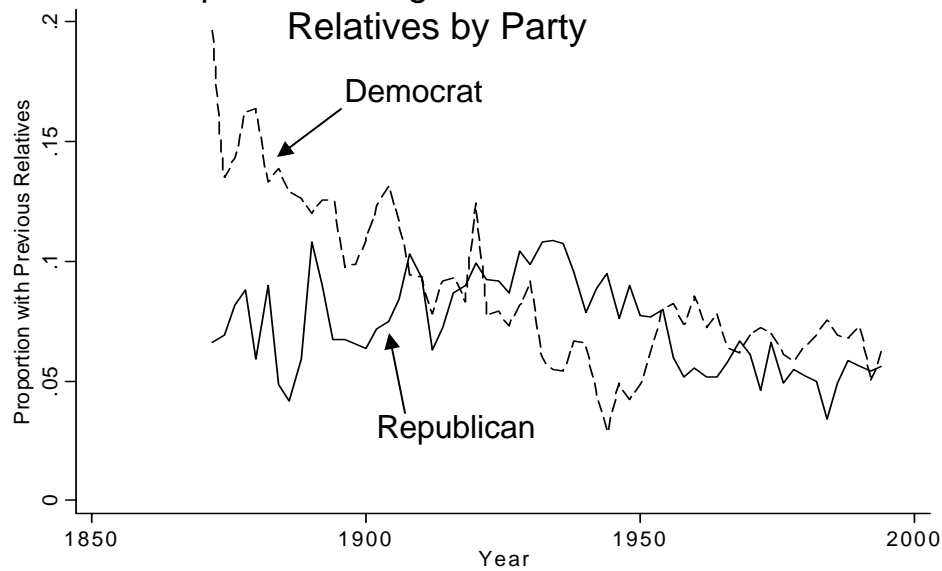
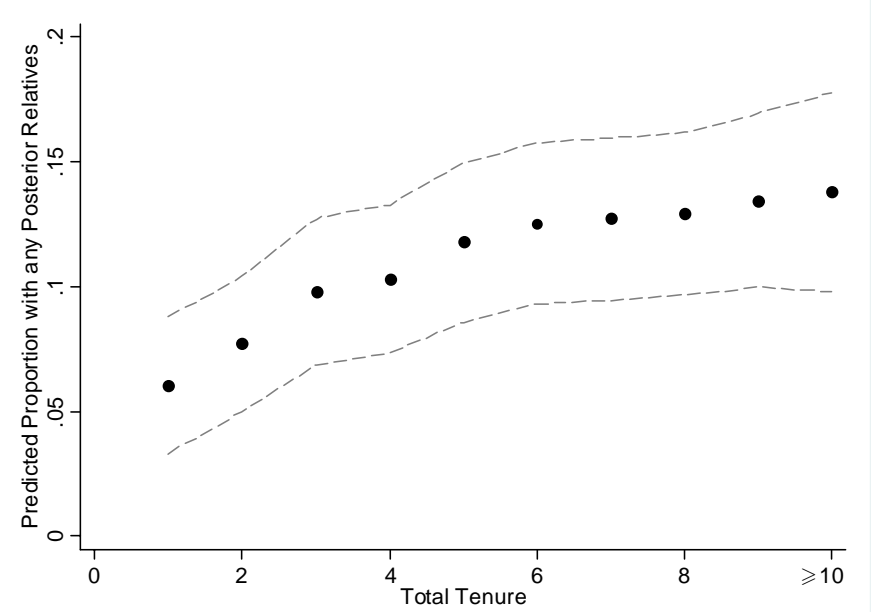
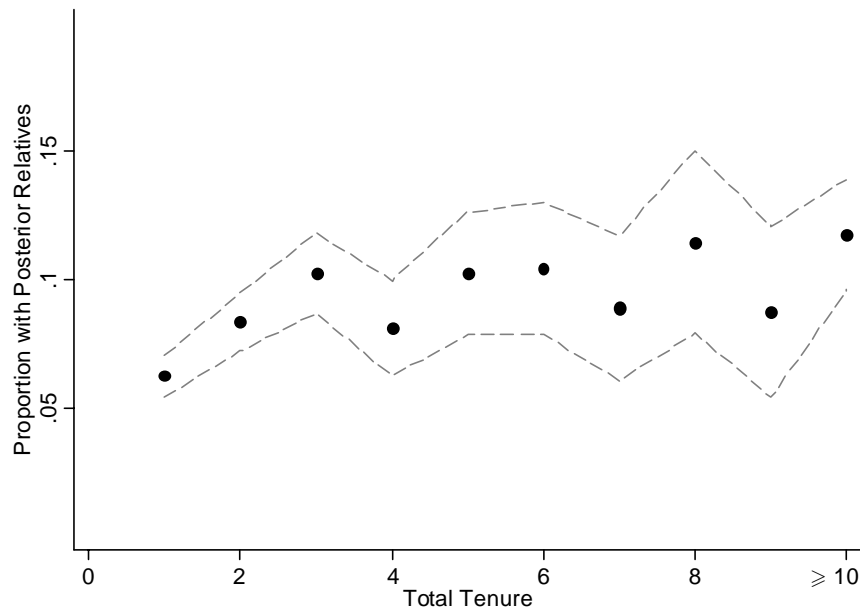


Figure 3: Impact of Total Tenure on the Probability a Legislator has a Posterior Relative

A: Unconditional Data

B: Predicted Values



Note: Figure 3B gives the predicted values from specification 10 in Table 5. Values of 10 or greater are replaced with ≥ 10 . This is done given the small number of observations greater than 10.

Figure 4: The Discontinuous Impact of Victory on Having Posterior Relatives

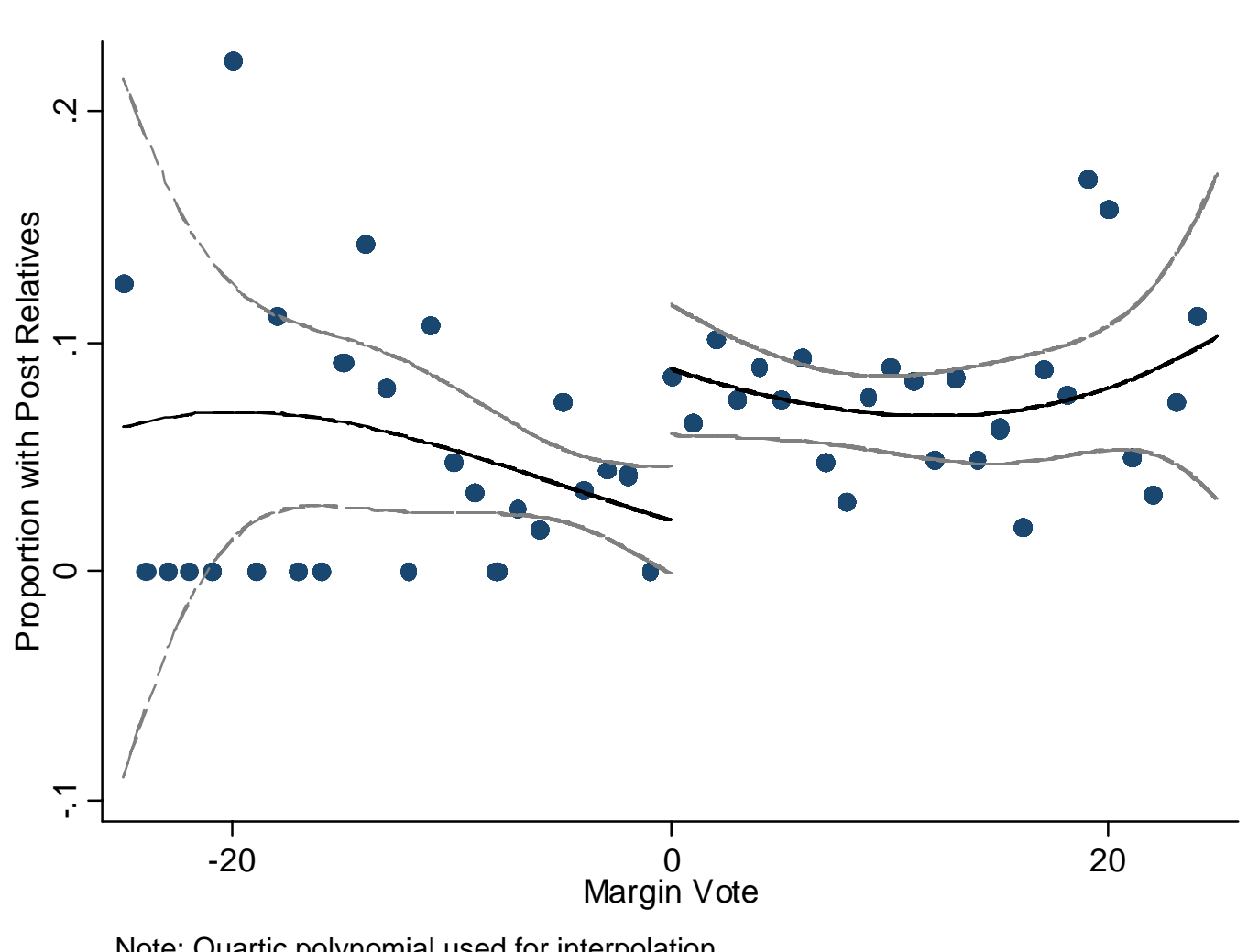
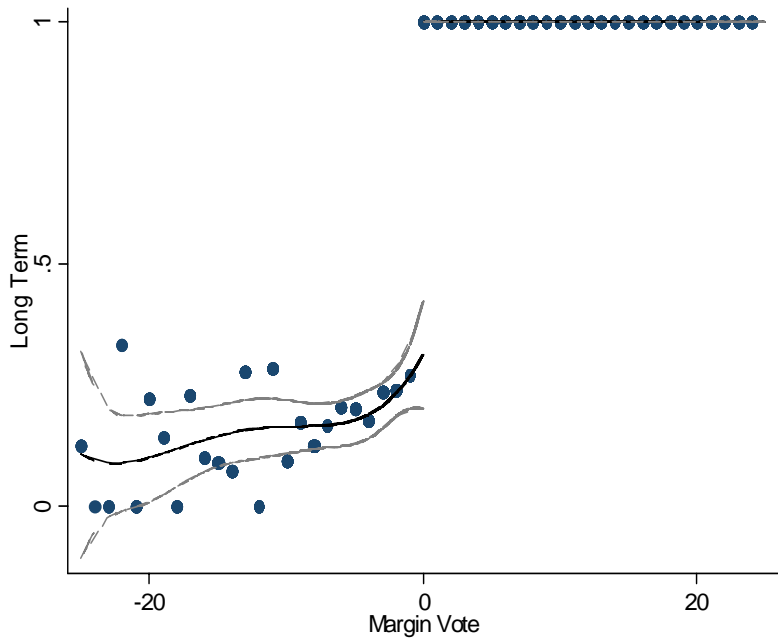
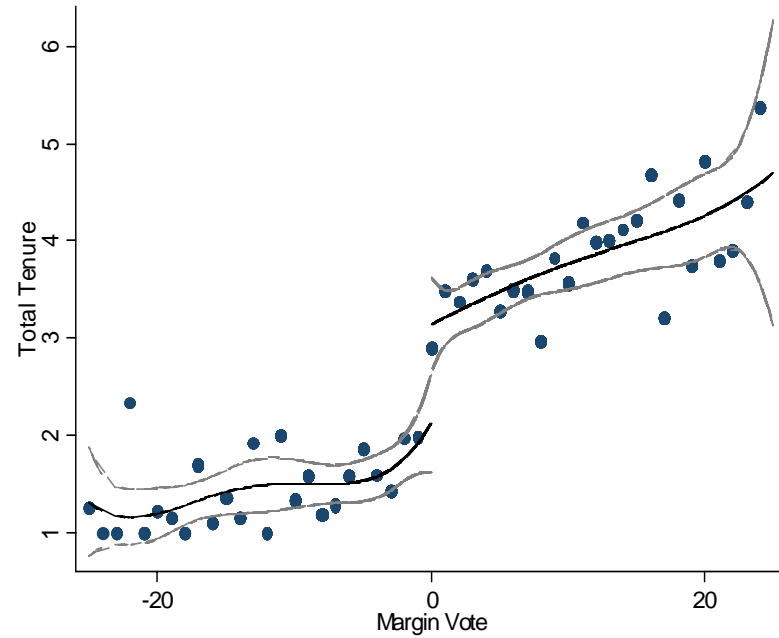


Figure 5: The Impact of the Vote Margin in First Reelection on Long Term and Total Tenure

A: Long Term



B: Total Tenure



Note: Quartic polynomial interacted with Margin Vote>0 used for interpolation.

Figure 6: Impact of Political Competition on Predicted Proportion of Individuals with Previous Relatives in Congress

